

Forestry in Louisa: Change in Population Density

Presented by David Stone, Forester Specialist (retired), Virginia Department of Forestry

Certified Forester, Society of American Foresters

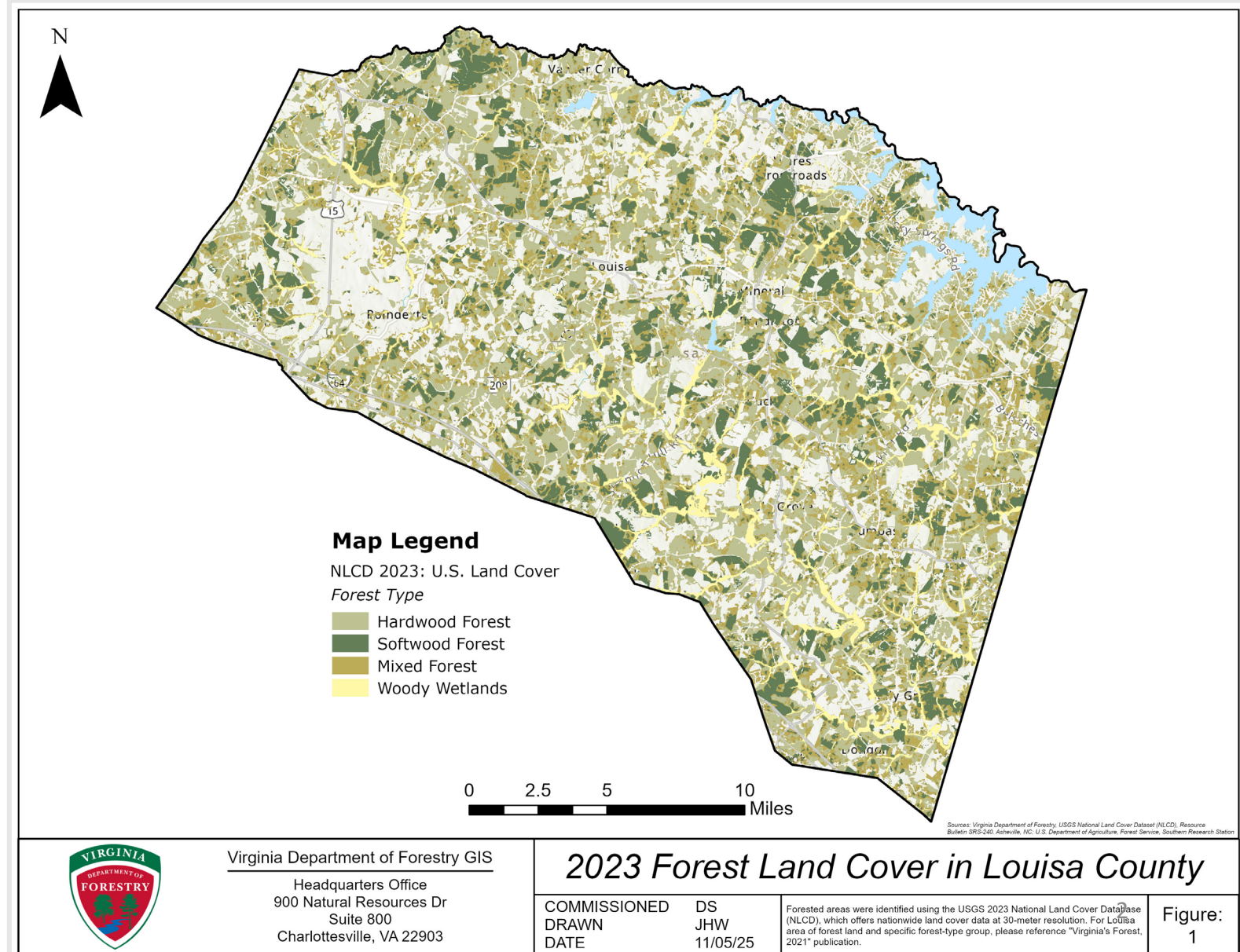
Certified Arborist, International Society of Arboriculture

January 2026

Louisa County Forest Cover

Significance of Forests:

- Water Quality and
- Ground Water Recharge
- Air Quality (CO2 to O2)
- Quality of Life, Scenic Vistas (Rural Character)
- Landowner Income and Indirect Economic Impacts
- Less per \$ Country Services for Each \$ Paid in Taxes
- Recreation
- Wildlife



Louisa County Forest Economic Information

- Direct Economic impact: \$66,481,955
 - Primary/secondary manufacturing and production
- Indirect economic impact: \$20,778,575
 - Services to Industry, i.e., trucking, supplies, maintenance, construction, etc.
- Induced economic impact: \$13,823,898
 - Employee spending
- **Total Economic Impact: \$101,084,428**

Base Year 1999

Change in Percent of Louisa County Forest Lands Over 29 Years

Forests covered 72% of Louisa County's land in 1992

(Forest Statistics for Virginia 1992, USDA, Forest Service)

In 2021, forested land accounted for 62% of Louisa County
Forests

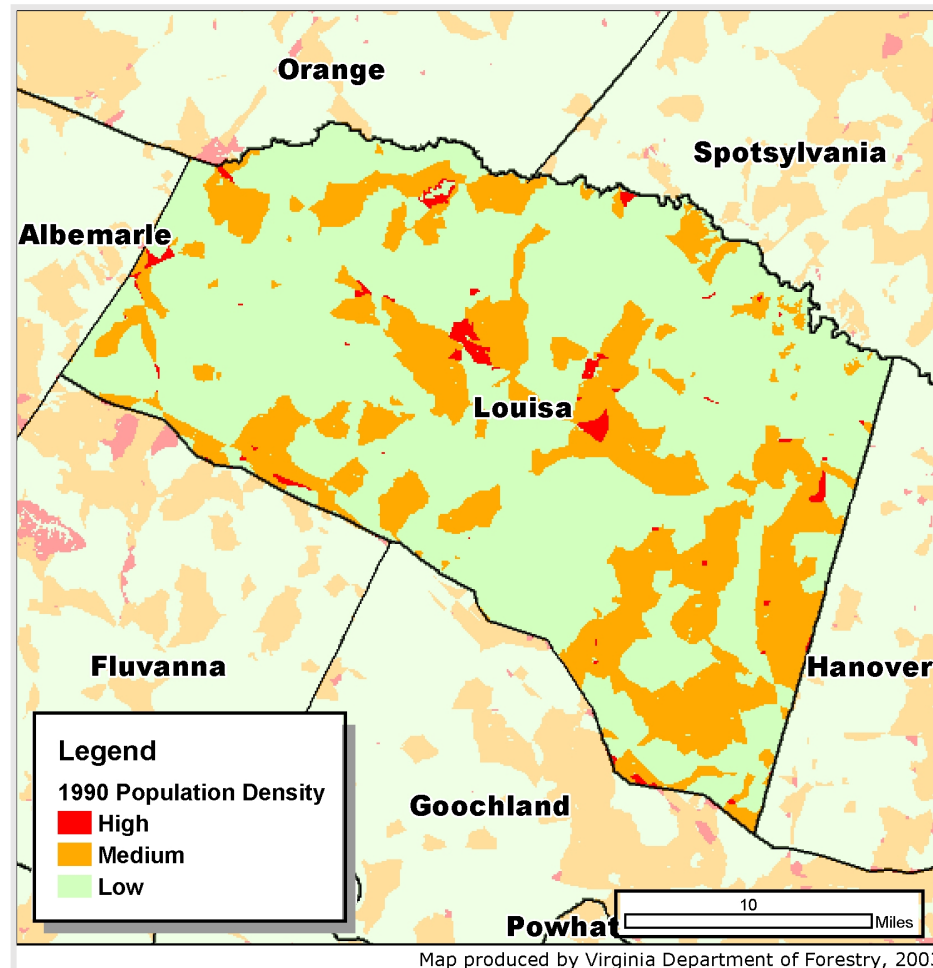
(Virginia's Forests, 2021, USDA, Forest Service)

Almost all of Louisa's Forest Land is owned by private citizens.

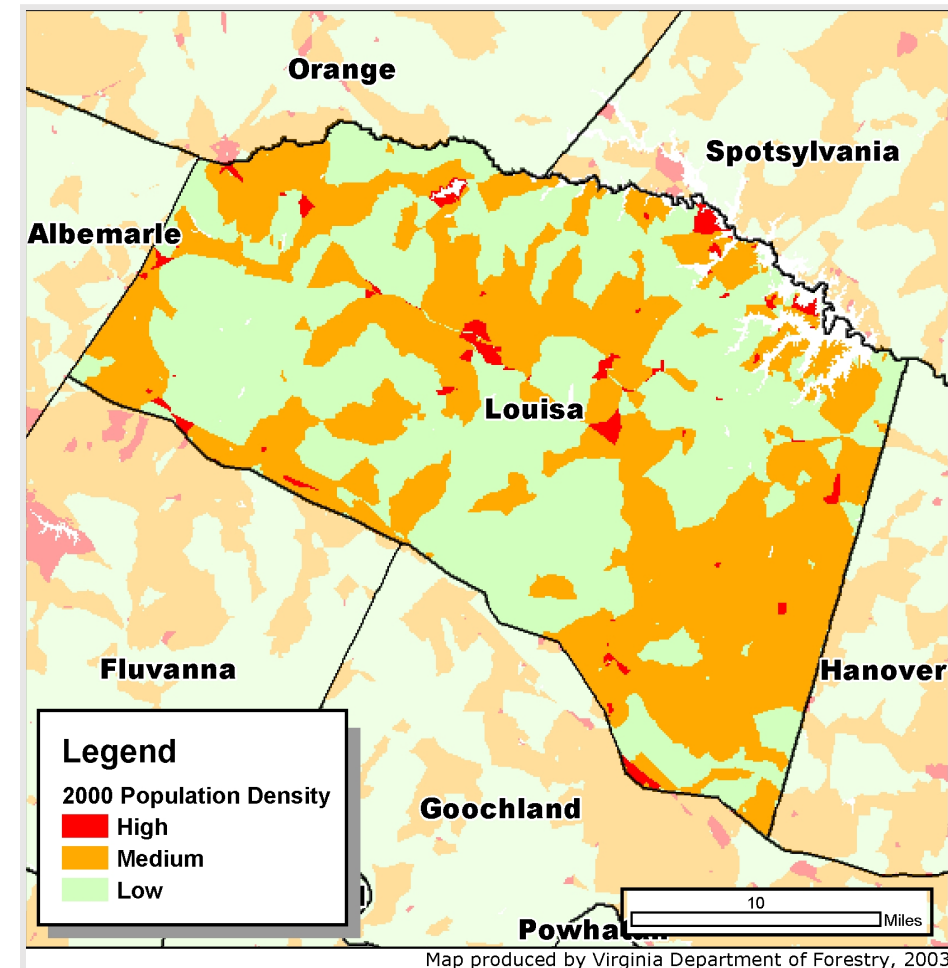
Change in Population Density



1990 Census



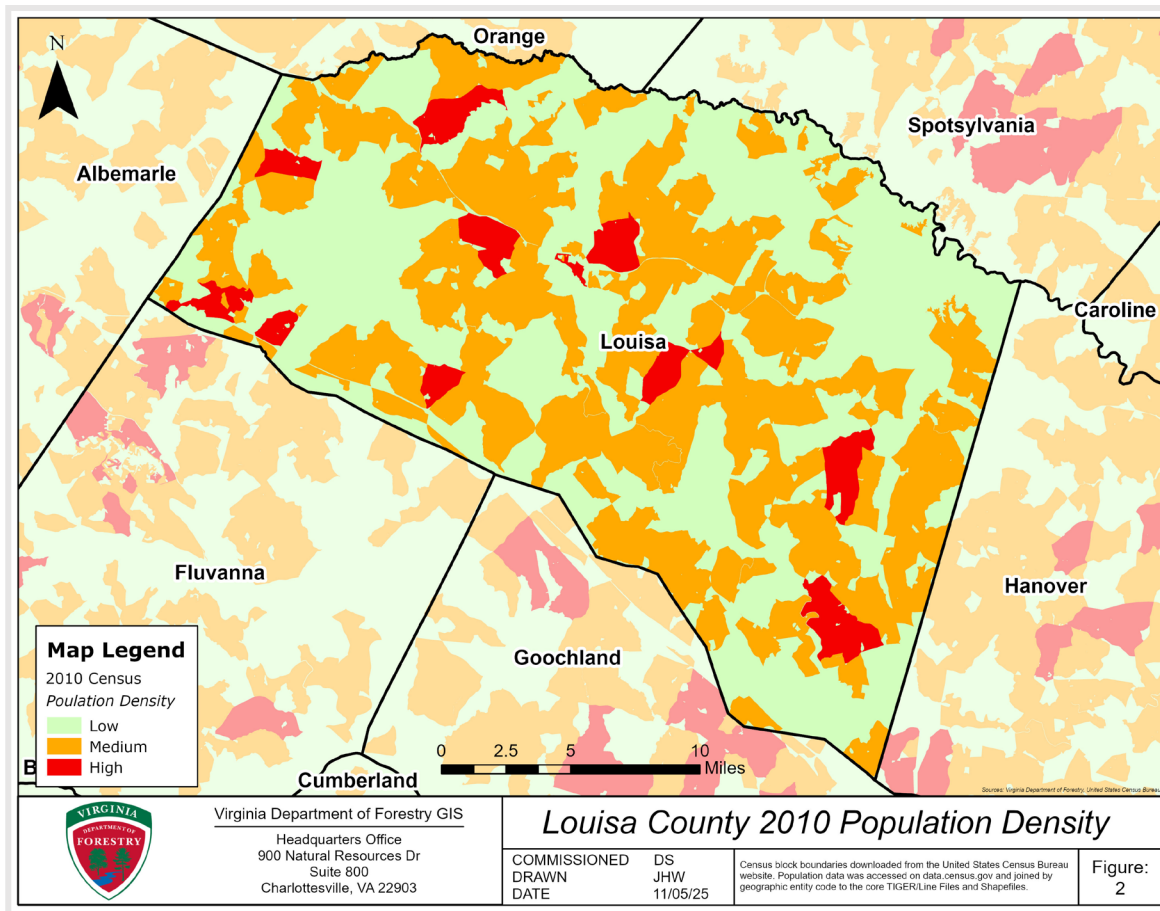
2000 Census



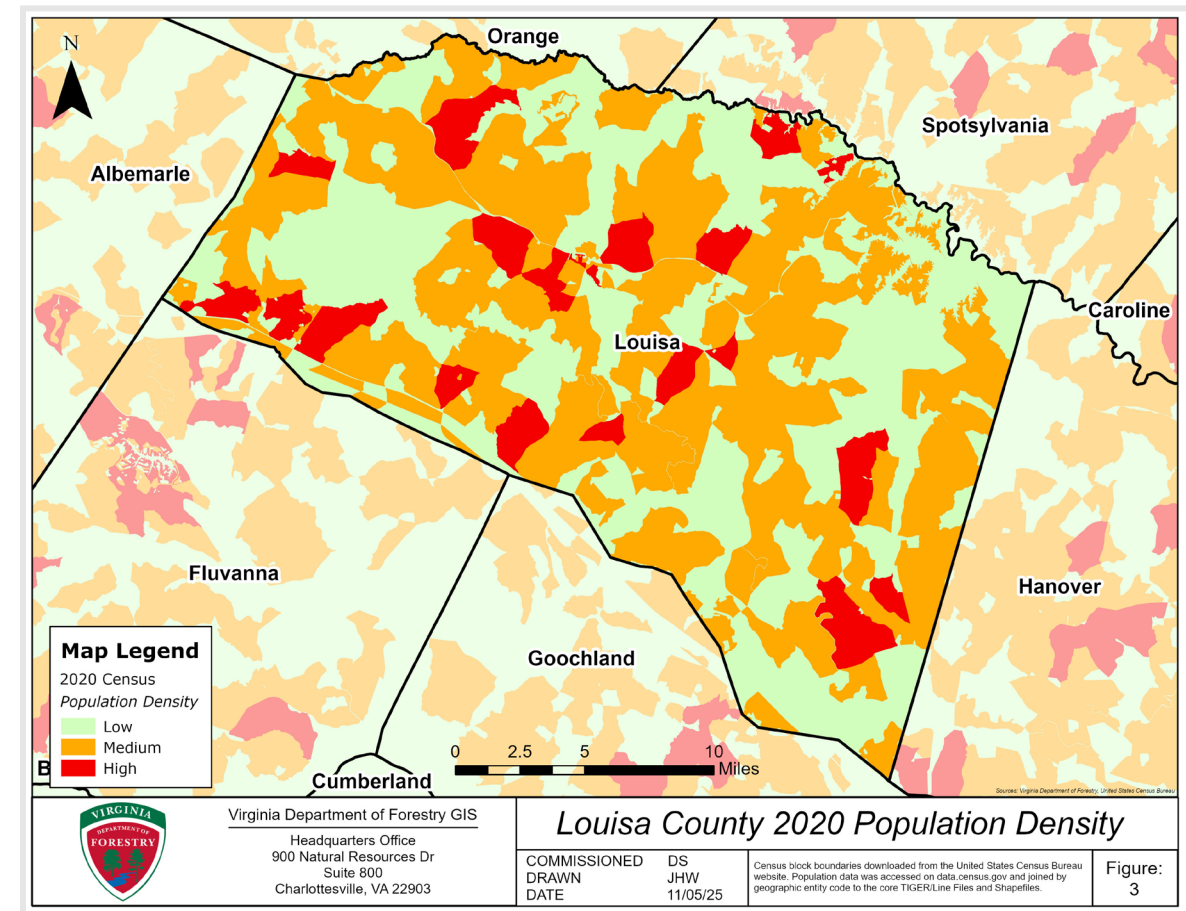
Change in Population Density

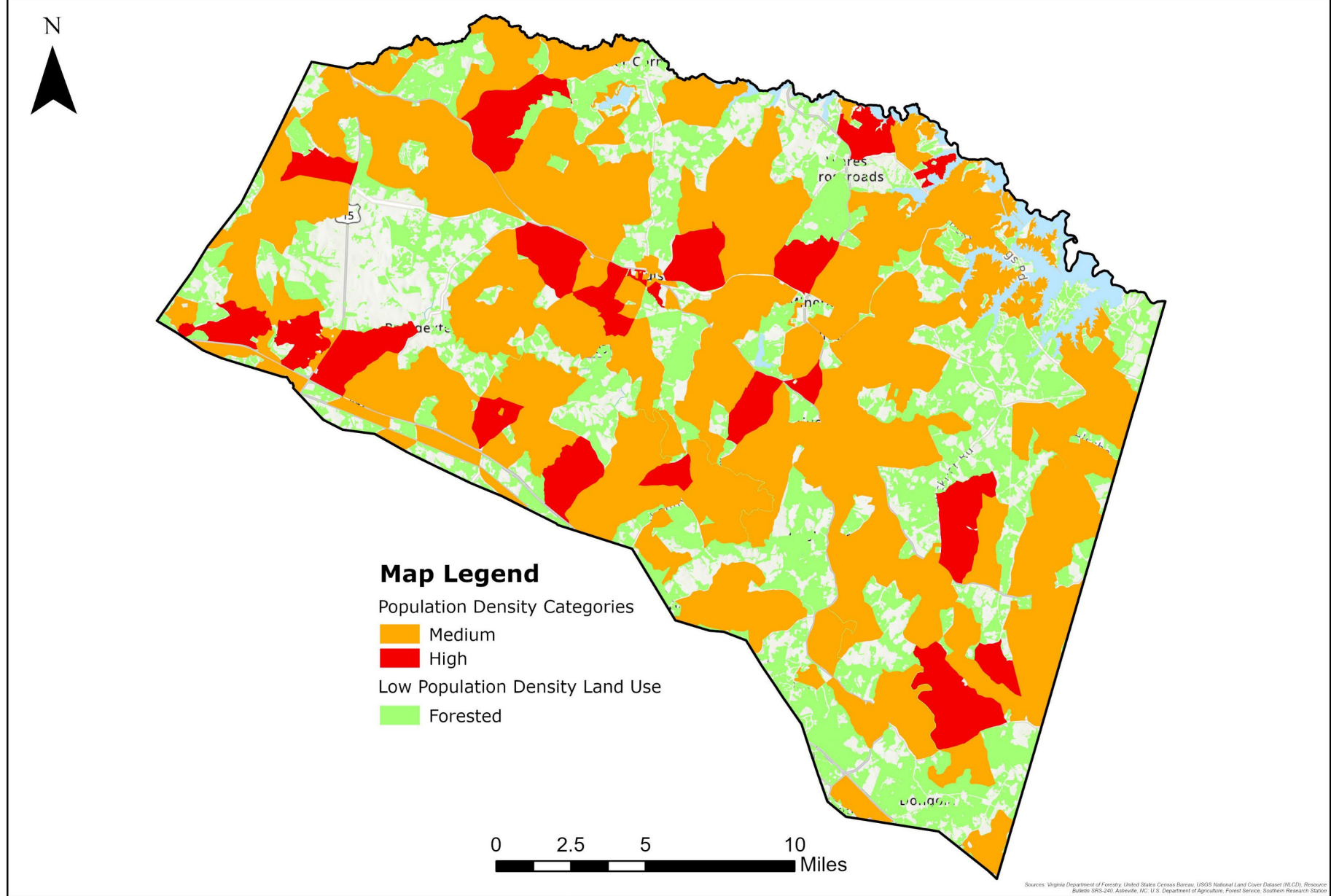


2010 Census



2020 Census





Virginia Department of Forestry GIS

Headquarters Office
900 Natural Resources Dr
Suite 800
Charlottesville, VA 22903

2020 Population Density & Forest Lands

COMMISSIONED
DRAWN
DATE

DS
JHW
11/05/25

Census block boundaries downloaded from the United States Census Bureau website. Population data was accessed on data.census.gov and joined by geographic entity code to the core TIGER/Line Files and Shapefiles. Forested areas were identified using the USGS 2023 National Land Cover Database (NLCD), which offers nationwide land cover data at 30-meter resolution.

Figure:
4

Some Forestland Conservation Strategies

- Agricultural/Forestal Districts
- Land Use Taxation
- Conservation Easement Programs
- Purchase of Development Rights (PDRs)